



Solaris Pendant

A star-shaped pendant with Matubo Rivoli and new Nib-Bit beads



Material (for one pendant):

Matubo NIB-BIT (18 pcs)

Matubo Rivoli, 16mm (1 pc)

3mm firepolished beads (9 pcs)

11/0 Japanese seed beads (approx. 1 gram)

15/0 Japanese seed beads (approx. 1 gram)

Beading needle and thread (Nymo, Fireline)

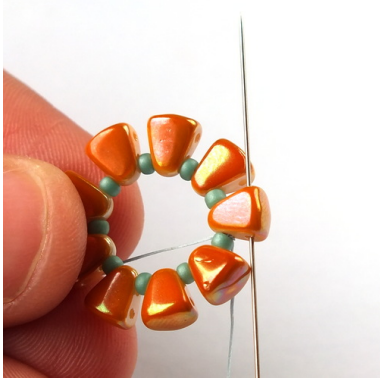
Difficulty: Intermediate



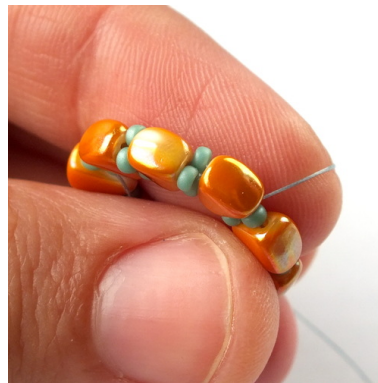
1) String one 11/0, one NB (narrow end), one 11/0, one NB (narrow end) ... total nine of each.



6) Repeat steps 3 - 5 - add one more 11/0 between each NB.



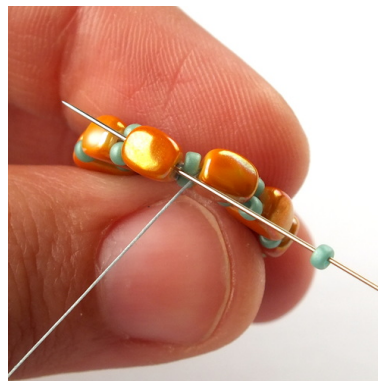
2) Slide all the beads to the end of the thread and tie a square knot to form a circle. Then pass through the upper hole (wide end) of the nearest NB bead.



7) You should get two 11/0s in each gap (as shown in the photo).



3) Add one 11/0 and pass through the upper hole (wide end) of the next NB bead.



8) Keep adding new 11/0s, until you reach the end of the row.



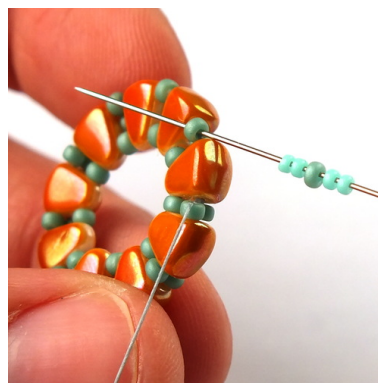
4) Repeat step 3...



9) Make a step-up by passing through the first 11/0 you added in this row.



5) ... until you reach the end of the row.



10) Add two 15/0s, one 11/0 and two 15/0s and pass through the next 11/0 in the same row.

Pull snug.



11) Repeat step 10...

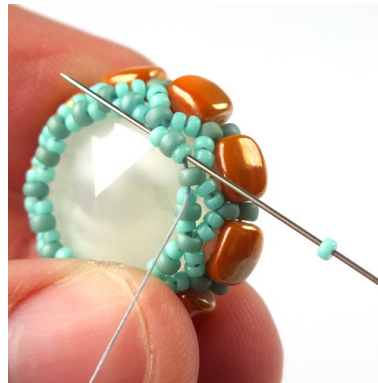
12) ... until you reach the end of the row. At the end of the row add one last group of (2x15/0, 11/0, 2x15/0), pass through the last 11/0 in the row and then make the step-up by passing through the first two 15/0s and one 11/0 you added in this row.



15) Repeat step 14, until you reach the end of the row.
Keep your tension very tight; if necessary, weave through the entire row one more time.



16) At the end of the row make the step-up by passing through the first group of (15/0, 11/0, 15/0).



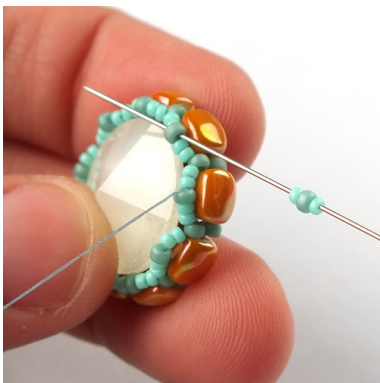
17) Add one 15/0, then pass through the next group of (15/0, 11/0, 15/0) from the previous row.



13) Put the rivoli inside.



18) Repeat step 17...

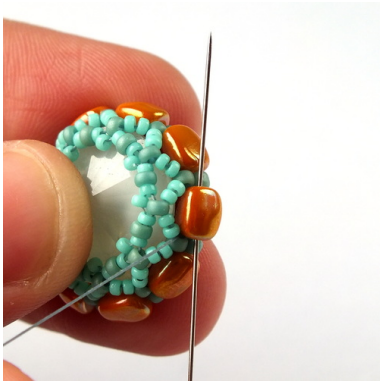


14) Add one 15/0, one 11/0 and one 15/0 and pass through the next 11/0 in the row.

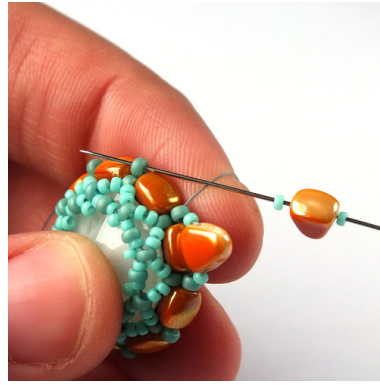


19) ... until you reach the end of the row.

The basic bezel is finished.



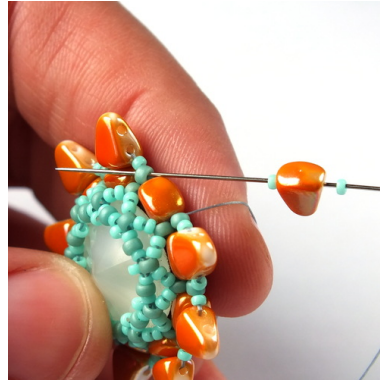
20) Weave through beads to get to the upper hole (wide end) of one of the NB beads.



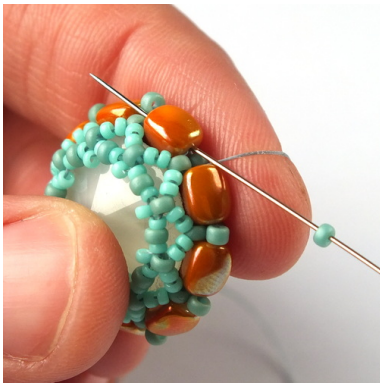
25) Repeat step 24...



21) Add one 11/0 and pass through the upper hole (wide end) of the next NB bead.



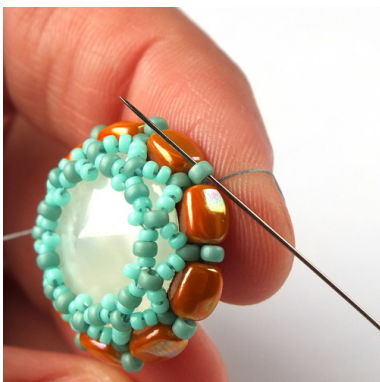
26) ... until you reach the end of the row.



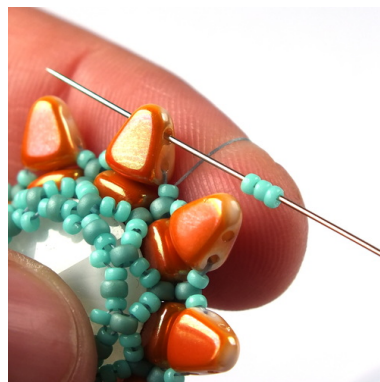
22) Repeat step 21, until you reach the end of the row.



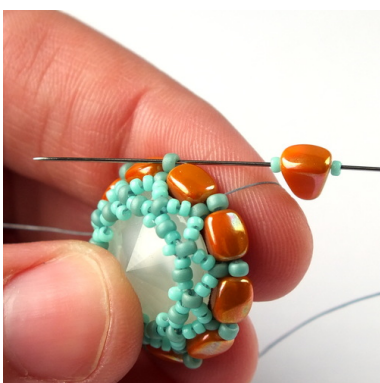
27) Make the step-up by passing through the first 15/0 in the row.



23) Make the step-up by passing through the first 11/0 you added in this row.



28) Add three 15/0s and pass through the upper hole (narrow end) of the next NB bead.



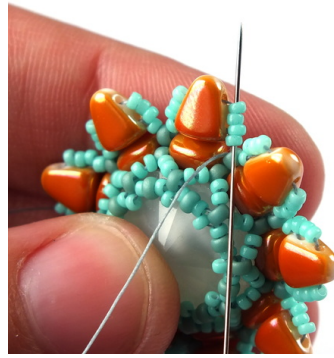
24) Add one 15/0, one NB (wide end) and one 15/0 and pass through the next 11/0 in the row.



29) Add three 15/0s and pass through the next 15/0...



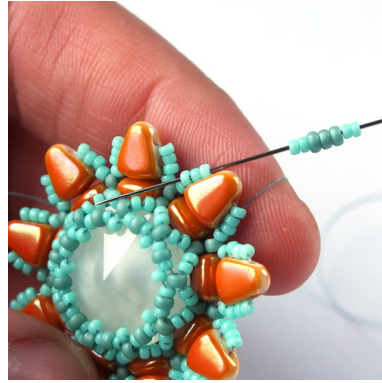
30) ... through the next 11/0...



34) Go up through the next four 15/0s.



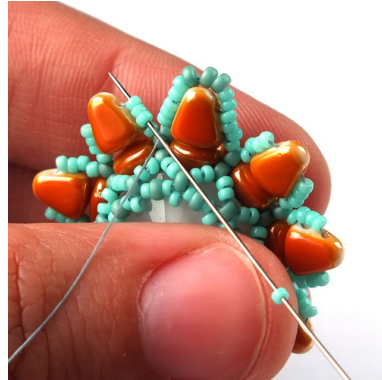
31) ... and through the next 15/0.



35) Add two 15/0s, three 11/0s and two 15/0s and then go down through the next three 15/0s.



32) Repeat steps 28 - 31...

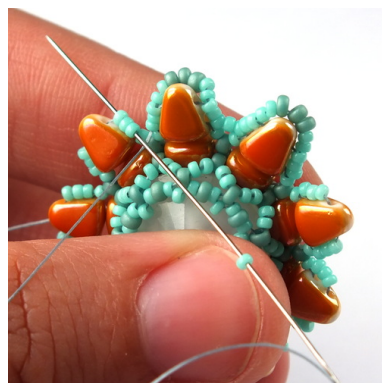


36) Add one 15/0 and go up through the next three 15/0s (as shown in the photo).

33) ... until you reach the end of the row. The thread should exit from one of the 11/0s.



37) Repeat step 35...



38) ... and step 36, until you reach the end of the row.



39) Then weave through the entire row one more time, but always exit from the first 11/0 on the top ...



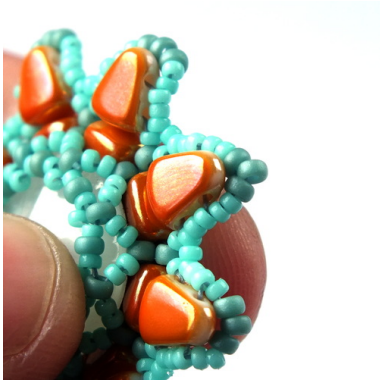
44) Repeat step 43, until you reach the end of the row. Then tie a few square knots and cut off all the remaining thread.



40) ... skip the second one (the middle one) and then go down through the third one.



45) The pendant is finished.



41) Pull snug - the middle 11/0 will make the sharp point.

This design works well with both TOHO seed beads and Miyuki seed beads; however the finished pendant might look a little different with each type of seed beads.

Repeat steps 39 - 40, until you reach the end of the row.

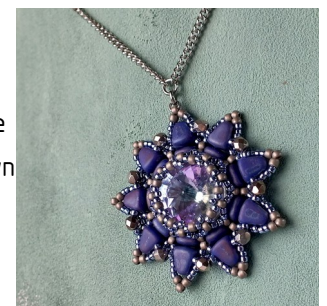


When using only Miyuki seed beads, the points will be shorter and when you skip the middle 11/0 in the last row, they will curl down, under the Nib-Bit.



42) Weave through beads to get to the lower hole (wide end) of one of the "new" NB beads.

When using only TOHO seed beads, the points will be a little bit longer and they will curl down just a little bit or not at all.



43) Add one 15/0, one 3mm FP and one 15/0 and pass through the lower hole (wide end) of the next NB bead in the row.

Colorways



Matubo NIB-BIT 03000/29123

Matubo Rivoli ALABASTER

11/0 Miyuki Seed Beads 2028 Opaque Sea Foam Luster Mat

15/0 Miyuki Seed Beads 4472 Duracoat Opaque Catalina

3mm FP 04000



Matubo NIB-BIT 33050/85001

Matubo Rivoli LIGHT VITRIL

11/0 TOHO Seed Beads Metallic Frosted Antique Silver 566

15/0 TOHO Seed Beads Permanent Finish Galvanized Metallic Polaris PF567

3mm FP 23980/27400



Matubo NIB-BIT 63130/15495

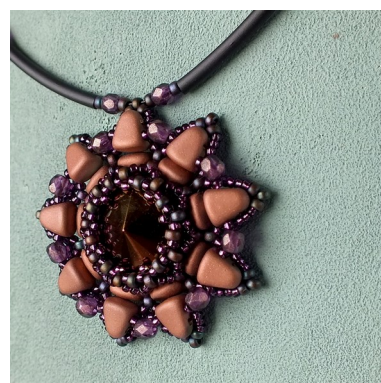
Matubo Rivoli CORAL

11/0 TOHO Seed Beads Semi Glazed - Turquoise 2604F

11/0 TOHO Seed Beads Opaque Pepper Red 45

15/0 TOHO Seed Beads Hybrid Red Pepper Picasso Y304

3mm FP 93200



Matubo NIB-BIT 00030/98842

Matubo Rivoli BROWN FLARE

11/0 Miyuki Seed Beads 2005 Matte Metallic Raspberry Iris

15/0 Miyuki Seed Beads 1428 S/L Wine

3mm FP 00030/69216