


PRECIOSA ORNELA introduces beads and seed beads from the PRECIOSA Traditional Czech Beads™ brand.

DESIGN BY HELENA CHMELÍKOVÁ

### The earrings

Sew four outer cells. Place them vertically. Thread a thin ring to the upper and lower protruding R8. Add a butterfly back or earring hook to the top one. Hang the pendant on the lower one using a small ring.



 PRECIOSA | Traditional Czech Beads

# HONEYCOMB

A LUXURY SET MADE FROM PRECIOSA Twin™ AND PRECIOSA Rocailles



Find all beads for this project on [www.CzechBeadsExclusive.com](http://www.CzechBeadsExclusive.com) (click here!)

 PRECIOSA | Traditional Czech Beads

**BEAD SHOP ZÁSADA**  
468 25 Zásada  
+420 488 117 743  
beadshop@preciosa.com  
50°41'49 N, 15°15'55 E

**GLASS SHOP DESNÁ**  
Krkonoská, 468 61 Desná  
+420 488 117 525  
glassshop@preciosa.com  
50°45'41 N, 15°19'7 E

preciosa-ornela.com  
facebook.com/PreciosaOrnela

March 2017 © PRECIOSA ORNELA, a.s.



**PRECIOSA Twin™**  
ART No.: 117 01 323  
SIZE 2,5 x 5 mm



**PRECIOSA Rocailles**  
ART No.: 331 19 001  
SIZE: 8 mm, 12 mm



The universal options for the uses of PRECIOSA Twin™ are absolutely inexhaustible. Try making the following structures and make an effective necklace.

**Materials and tools:**

PRECIOSA Twin™ (T)  
117 01 323; 2.5 x 5 mm;  
00030/27501 ARGENTIC;  
172x for the necklace; 38x for the earrings



PRECIOSA rocailles (R8)  
331 19 001; 8/0;  
18581 gold; 323x for the necklace;  
68x for the earrings



PRECIOSA rocailles (R12)  
331 19 001; 12/0;  
18581 gold; 6x for the necklace



- gold metal parts; a chain with medium-sized links; an adjusting chain; rings made of thin wire; small rings; a carabiner; a butterfly back or earring hook; pear-shaped stones set in a cup (this can be replaced with pear-shaped beads on eye pins)



- a thin needle; a 0.20 mm nylon line; scissors; flat nose pliers; snipping pliers



Difficulty: ●●●●●●●●●●

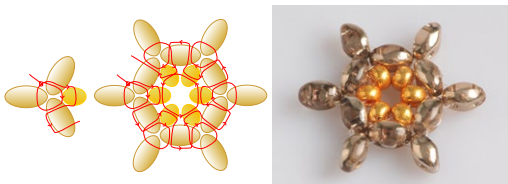
**Procedure:**

**Sewing the honeycomb**

The honeycomb can be divided into individual cells; internal and outer cells.

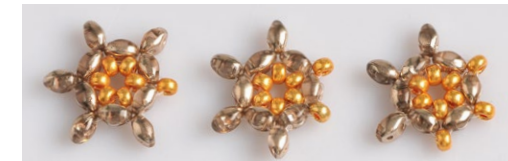
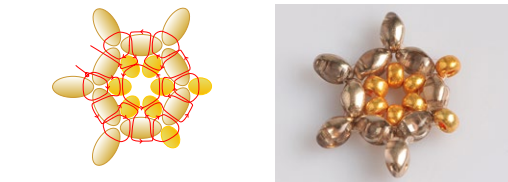
**The internal cell**

String 3x T. Tie them together. Thread the line through the nearest hole of the T. String 1x R8. Thread the line through both holes in the following T. String 2x T. Connect the 3x T. String 1x R8. Connect 3x T in this way another 4 times. Add R8 3x. String the last R8. Thread the other 5x R8. Thread the line through the strung 6x R8 one more time. Thread the line through the hole in the T.



**The outer cell**

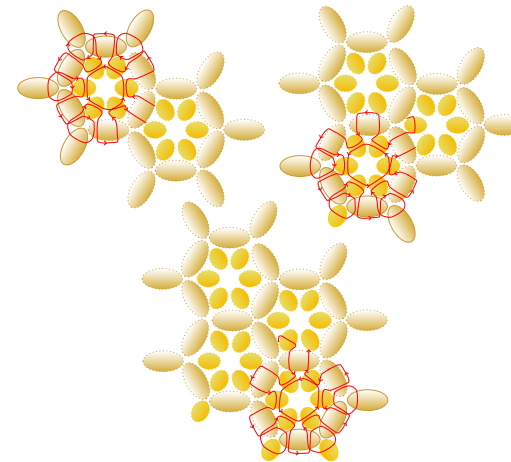
Instead of the 3x T, string 2x T and 1x R8. In most outer cells, the 3x T are replaced in this way only once. In the lower central and lower side cells replace the 3x T twice. Replace the 3x T three times in the upper side cells.



**The connection of the other cells**

If the 3x T have already been sewn, only add the R8. Otherwise continue with the stringing by sewing 3x T and adding 1x R8. The connection of the internal R8 is undertaken in the same way. Carefully sew through the holes in the T several times.

**Examples of connections**



**the connection of the side**



**the connection of the centre**



**Connecting the R8 at the lower central and upper side cells**

String 2x R8. Thread the line through them twice using the „right-angle“ stitch. String 1x R8 on the left and right. Thread the line through the R8 on the cell. String 1x R12. Return to the R8 on the cell. Thread one end of the line through 2x R8 and the second 1x R8. Tie it off and sew it in.



**Hanging the pendant**

Thread a thin ring through the protruding R8 in the middle, the third cells from the middle and the sixth cells from the middle. Hang the pendant using a smaller ring.



**The placement of the chains**

Thread a thin ring in the protruding R8 on the upper side cell and on the second top cell. Connect the chains to them. Adjust the length according to your needs. Connect the second end of the chain with a small ring. Connect a carabiner on the right-hand side. Connect an 8 cm adjusting chain decorated with a ring with 3x R8 on the left.

