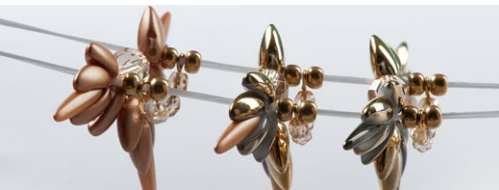




### Stringing the fragments

Step 8:

String 1x **R6**, an arch loop, 1x **R6** and the fragment opening at the outer spur.  
Continue in the same manner until you have strung all 21 fragments. Repeatedly string the different fragment types one after the other (the gold half metallic finish, the mixture, the gold pastel). Make sure that the fragments and the arches are oriented in the same direction. String the second row. String 1x **R6**, an arch loop, 1x **R6** and the opening of the fragment at the outer spur. Tie off the end of the flexible line and cut it off.



DESIGN BY HELENA CHMELÍKOVÁ

PRECIOSA ORNELA introduces beads and seed beads from the PRECIOSA Traditional Czech Beads™ brand.

 PRECIOSA | Traditional Czech Beads

**BEAD SHOP ZÁSADA**  
468 25 Zásada  
+420 488 117 743  
beadshop@preciosa.com  
50°41'49 N, 15°15'55 E

**GLASS SHOP DESNÁ**  
Krkonoská, 468 61 Desná  
+420 488 117 525  
glassshop@preciosa.com  
50°45'41 N, 15°19'7 E

preciosa-ornela.com  
facebook.com/PreciosaOrnela

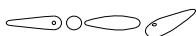
May 2016 © PRECIOSA ORNELA, a.s.



**PRECIOSA Chili™**  
ART No.: 111 01 357  
SIZE: 4 x 11 mm



**PRECIOSA Thorn™**  
ART No.: 111 01 340  
SIZE: 5 x 16 mm




**PRECIOSA Rocailles**  
ART No.: 331 29 001  
SIZE: 10/0



**PRECIOSA Rocailles**  
ART No.: 331 19 001  
SIZE: 6/0



 PRECIOSA | Traditional Czech Beads

Find all beads for this project on  
[www.CzechBeadsExclusive.com](http://www.CzechBeadsExclusive.com) (click here!)

## SPURS

SEWN BRACELET MADE FROM PRECIOSA Chili™ AND PRECIOSA Thorn™ BEADS

Preciosa Ornela presents the excellent combination options presented by the new pressed beads from the **PRECIOSA Traditional Czech Beads™** brand. The slender shape of the **PRECIOSA Thorn™** pressed bead fits excellently into the dimple on the internal side of the two-hole **PRECIOSA Chilli™** pressed bead. The ridges of the beads interlock in the side dimples of the adjacent beads and as such they form an articulated, but compact unit of individual fragments from which you can assemble as a luxurious bracelet.

**Materials and tools:**

PRECIOSA Chilli™ (**Ch**)  
111 01 357; 4 x 11 mm;  
02010/26441 gold half metallic finish; 164x  
111 01 357; 4 x 11 mm;  
02010/25003 gold pastel; 82x



PRECIOSA Thorn™ (**Th**)  
111 01 340; 5 x 16 mm;  
00030/26441 gold half metallic finish; 21x  
111 01 340; 5 x 16 mm;  
02010/25003 gold pastel; 42x



PRECIOSA Rocailles (**R10**)  
331 29 001; 10/0; 17070; 42x



PRECIOSA Rocailles (**R6**)  
331 19 001; 6/0; 68388; 84x



PRECIOSA Fire Polished Beads (**FPB8**)  
151 19 001; 8 mm; 00030/23500; 21x



PRECIOSA Fire Polished Beads (**FPB4**)  
151 19 001; 4 mm; 00030/23901; 84x



gold eye pins, about 30 mm long (21x);  
Opelon or another flexible line;  
a 0.20 mm nylon line; a thin needle; scissors;

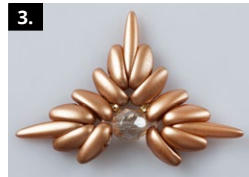
flat nose pliers (flattening the beginning of the nylon line); needle nose pliers



Difficulty: 

**Procedure:**

The bracelet consists of 21 sewn fragments. These are then strung onto a flexible line and reinforced with an eye pin arch. 7 fragments are sewn from Chilli and Thorn with a gold half metallic finish (Fig. 1). 7 fragments are sewn from Chilli with a gold half metallic finish and Thorn with a gold pastel finish (Fig. 2) and the next 7 fragments are sewn from Chilli and Thorn with a gold pastel finish (Fig. 3).



**The fragment**

Step 1:  
Sew the first spur. String 1x **Ch** through the lower hole in the dimple. Thread the line through the central hole on the ridge of the same **Ch**. String another **Ch** from the ridge through the lower hole. String another **Ch** from the dimple through the lower hole. Thread the line through the central hole on the ridge of the same **Ch**. String 1 **Th**. Return to the second **Ch** and thread the line

through the central hole in its dimple. Thread the line through the lower hole of the same **Ch** and the third **Ch**. Thread the line through the central hole in the dimple of the next 1 **Ch**.

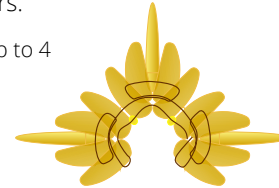


Step 2:  
Sew the central spur of the fragment in the same way. The only difference is that you should not thread the line through the lower hole of the first **Ch**.

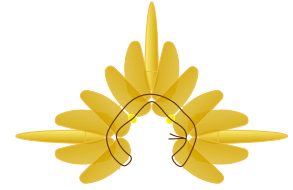
Step 3:  
Sew the last spur of the fragment in the same way. Do not thread the line through the lower hole in the first **Ch**.

Step 4:  
Thread the line through the lower holes of the protruding lower **Ch**. String 1x **R10** between the spurs.

step 1 up to 4



Step 5:  
Reinforce the fragment. Thread the line through both holes of the first **Ch** in the first spur. Thread the line through the lower hole of the two opposite **Ch**. Thread the line through the central hole of the next two **Ch**. Thread the line through the lower hole of the next two opposite **Ch**. Thread the line through the central hole of the next two opposite **Ch**. Thread the line through the lower hole of the next two opposite **Ch**. Thread the line through both holes of the last **Ch**. Thread the line through the lower hole of the protruding lower **Ch** and **R10**. Tie off both ends using two knots.



Step 6:  
String 1x **FPB8**. Thread the line through the opening at the outer spur. Thread the line through the **FPB8** again. Thread the line through the opening at the opposite spur. Thread the line through the **FPB8** again. Thread the line through the opening at the spur and the **FPB8** once again. Tie off the line using two knots. Pull the ends into the outer **Ch**.



**The eye pin arch**

Step 7:  
String 4x **FPB4** on any eye pin. Shape the pin into an arch. You will need about 1 cm of wire to create the loop. Twist the loop. Grasp the end of the wire between the points of the pliers. Twist it around the point. The loops should be twisted in the same way. Prepare 21 loops.